

志特集团

股票代码: SZ 300986

运营总部: 粤港澳大湾区-广东中山翠亨新区和清路13号志特新材科技园

华南基地一: 广东省江门市开平翠山湖科技园

华南基地二: 广东省惠州市产业转移工业园

华东基地一: 江西省抚州市广昌县工业园区

华东基地二: 福建省福州市闽清县白中工业园区

华中基地: 湖北省咸宁高新技术产业开发区

华北基地: 山东省潍坊市临朐铝模板产业园

西南基地: 重庆市潼南高新区现代制造产业园

西北基地: 甘肃省定西市安定区循环经济园区

海南基地: 海南省临高县金牌港开发区

海外基地: 马来西亚森美兰州

服务热线: 400-069-1399

全国销售热线: 0794-3633 999

GETO Group

Headquarters:

Greater Bay Area—No. 13 Heqing Road, Tsuihang New District, Zhongshan City, Guangdong Province

Southern China Production Base I :

Cuishan Lake Science and Technology Park, Kaiping, Jiangmen City, Guangdong Province

Southern China Production Base II:

Huizhou Industrial Transfer Industrial Park, Huizhou City, Guangdong Province

Eastern China Production Base I :

Guangchang Industrial Park, Fuzhou City, Jiangxi Province

Eastern China Production Base II:

Baizhong Industrial Park, Minqing, Fuzhou City, Fujian Province

Central China Production Base:

Hi-tech Industry Development Zone, Xianning City, Hubei Province

Northern China Production Base:

China Aluminium Industrial Park, Linqu, Weifang City, Shandong Province

Southwest China Production Base:

Modern Manufacturing Industrial Park, Tongnan High-Tech District, Chongqing City

Northwest China Production Base:

The Circular Economy Park, Anding District, Dingxi City, Gansu Province

Hainan Production Base:

Gold Medal Port Industrial Park, Lingao County, Hainan Province

ASEAN Production Base:

Negeri Sembilan, Malaysia

GETO INDIA

Regd. Off: C/703, RAAS, VU, Thakur Village, Kandivali East, Mumbai 400101

Operational Office: 8/11 Row House, Suncity Bungalows Shelter Heights, Suncity Rd,

Vasai West, Maharashtra 401202

Mobile: +91 7738091831, +91 9699173295

Email: skp@oxygreen.in; samit@geto.com.cn

Sales Hotline: 0086-760-88589004

E-mail: geto_market@geto.com.cn



www.getoformwork.com



PPVC整屋预制模具系统

PPVC Precast Housing Molds

经济 | 高效 | 安全 | 环保

High Economic | High Efficiency | Safety | Environmental-Friendly

公司介绍

Company Profile

志特新材是一家专注于新型建筑铝模、爬架、装配式PC构件,业务涵盖民建及公建领域的A股上市公司(股票代码:SZ 300986),公司从江西广昌革命老区起步,运营总部设在粤港澳大湾区腹地广东中山翠亨新区,产品畅销海内外全球30多个国家和地区。

华南生产基地分别位于广东江门、惠州,华东生产基地位于江西广昌,华中生产基地位于湖北咸宁,华北生产基地位于山东潍坊,西南生产基地位于重庆潼南,西北生产基地位于甘肃定西,海南自贸港装配式建筑基地位于临高金牌港,海外基地设在马来西亚森美兰州。公司是行业内率先实现规模化、专业化、智能化,专注模架、装配式系统研发、设计、生产、租售、技术服务为一体的首批特级资质企业,竭诚为客户提供超预期的优质服务。

公司产品涵盖铝合金标准层模板、地下室模板、变化层模板、屋面层模板、防空鼓装修模板、一体化隧道模板,爬架、爬模、塔式支撑、盘扣、单边支撑、悬挑等全系列模架产品,以及装配式构件产品的生产、供应,实现了“1+N”一站式服务战略模式落地。

未来,我们将以精进多年的信息化为依托,运用行业大数据、人工智能和物联网技术,打造全产业链生态圈系统,积极推动传统建筑向绿色智慧建筑革新转型。

GETO New Material is an A-share listed company (stock code: SZ 300986) focusing on new-type aluminium building formwork, self-climbing platform, and assembly precast concrete(PC) components, with civil and public construction fields covered. The company was established in Guangchang, an old revolutionary base in Jiangxi Province. Its global management headquarters was set up in Tsui Hang, a new district of Zhongshan in Guangdong Province, with the Greater Bay Area as its back-land. Our products are sold well in over 30 countries and regions around the world.

GETO Group has its Southern China production base located in Jiangmen and Huizhou of Guangdong Province, Eastern China production base in Guangchang, Jiangxi Province, Central China production base in Xianning, Hubei Province, Northern China production base in Weifang, Shandong Province, South-Western China production base in Tongnan, Chongqing Province, and North-Western China production base in Dingxi, Gansu Province. GETO Group also has its prefabricated construction base in Lingao Jinpai Port, a free-trade port in Hainan, and its ASEAN (Association of South East Asian Nations) production base in Negeri Sembilan of Malaysia. GETO is one of the first batch of super-qualified enterprises in the industry to realize scale, specialization, and intelligence, focusing on research and development, design, production, lease and sales, and technical services of aluminium formwork and assembly system. We are dedicated to offer high-quality products above expectation to our clients.

The products of our company include aluminium formwork system (for typical floors, basements, non-typical floors and roof floor), anti-hollowing formwork, integrated tunnel formwork, self-climbing platform, climbing formwork, tower-type scaffolding, ring-lock scaffolding, single-side wall framework, cantilever and other full range of formwork, scaffolding and precast component products, realizing the “N+1” one-stop solution service strategy.

With continuously improved information system we have from the past, we will initiate the industrial big data, artificial intelligence and IoT (Internet of Things) technologies to form omni-channel supply chain ecosystem in future. We actively promote innovation in transforming the conventional construction industry into a green and smart one.

目录

Contents

01	●	Product Introduction 产品介绍	P1
02	●	Competitive Advantages 产品优势	P4
03	●	Operational Flow of Formwork 施工流程	P6
04	●	Main Components 主要构件	P11
05	●	Project Cases 工程案例	P13


PRODUCT INTRODUCTION

产品介绍

01

■ 志特顺应新加坡政府建筑工业化的倡议, 秉持着以客户为中心的经营理念, 与合作伙伴共同经过多次的产品研发升级, 成功推出PPVC整屋预制模具系统及其附属产品。

Upholding the business philosophy of customer focused, GETO and its partners collaboratively committed into product development and upgrading works for the successful introduction of prefabricated prefinished volumetric construction (PPVC) precast housing molds system and its complementary products, as in compliance with the construction industrialization agenda proposed by Singapore Government.



志特服务 GETO SERVICES



定制化的
设计生产服务

Customized design
and production



专业的现场
安装指导服务

Professional
on-site support



高质量的产品交付
和施工效果

Qualified formwork system
and products (structure)

PPVC整屋预制模具系统 PPVC PRECAST HOUSING MOLDS



铝合金模板
Aluminium formwork

优势1: 交货周期短
Advantage 1: Short lead period

优势2: 方便装拆, 无需借助塔吊
Advantage 2: Easy assembly and disassembly
without using cranes

优势3: 残值高
Advantage 3: High scrap value

自动式钢模板
Automatic steel formwork

优势1: 人工成本更低
Advantage 1: Lower labour cost

优势2: 施工效率高
Advantage 2: High construction efficiency

优势3: 应用范围广泛
Advantage 3: Applicable for different PPVC
structures



非自动式钢模板
Non-automatic steel formwork

优势1: 材料成本较低
Advantage 1: Less material cost

优势2: 设计简单, 加工工艺成熟
Advantage 2: Easy design and mature
technology

Product Introduction
Competitive Advantages
Operational Flow of Formwork
Main Components
Project Cases

产品介绍
产品优势
施工流程
主要构件
工程案例

适用范围 APPLICATION SCOPE



预制房屋

PPVC prefabricated prefinished volumetric construction



预制箱涵

Precast concrete box culvert



预制管廊

Prefabricated pipe gallery



预制电梯井

Precast modular lift shaft (LS)



预制避难所

HSM prefabricated refuge center



预制洗漱间

Prefabricated bathroom unit (PBU)

COMPETITIVE ADVANTAGES 产品优势

02

- 志特PPVC整屋预制模具系统相比传统建筑技术(模具)具有以下明显优势:
Comparing to conventional building technologies in terms of construction formwork, the precast housing molds has apparent competitive advantages as listed below:

优势一: 施工效率高, 成品速度快

Advantage (1): High Construction Efficiency, Fast Finished Product



房屋顶板、侧墙、底板、门洞、窗户等一次性浇筑成型, 极大缩短了预制周期。相比传统钢模具, 施工效率上可得到50%以上的提升。

Housing precast formwork can form all structures of a building, including deck, side wall, base floor, door opening and window at one time, thus minimizing duration for the precast structure formation. Compared with the traditional steel formwork, it has over 50% enhancement in working site efficiency.

优势二: 安全生产

Advantage (2): Safe Construction



工人的劳动强度得到明显改善, 施工安全得到更好的保障。

PPVC helps ease site labour's working intensity, while offering more assurance for construction workplace safety.

优势三: 自动化生产, 成型质量好, 成本更节省
Advantage (3): Automated Production, Good Casting Quality and More Cost Saving



伸缩式钢结构和自动化控制系统可实现机器设备替代人工的操作, 能够自动合模、脱模。相比传统钢模具, 人工成本上可节省40%以上。

The extendable steel structure and automated control system can replace manual operations by machineries, realizing automated clamping and demoulding of the product outcomes. Compared with the traditional steel formwork, it saves up over 40% of labour cost.

自支撑内外模架可不依靠穿墙螺杆抵抗混凝土侧压力, 减少人工操作, 并且极大提升预制构件质量, 成型品质上可接近清水混凝土效果, 减少房屋渗漏水的可能性。

The self-equipped with internal and the external support frame system does not need the tie-rod system to withstand side pressure of concrete pouring. With this technique in place, the production system can effectively minimize its dependence on labours, maximize the quality of precast outcome, and the most importantly, decrease the possibility of water leakage in the building formed by the system. Outcome of product casting is similar to effect of fair-faced concrete.

优势四: 环境友好
Advantage (4): Environmental Friendly



绿色、低碳、自动化程度高的作业环境, 符合全球低碳经济的趋势和各国政府倡导的绿色建筑理念, 正在逐步替代传统建筑技术。

The green, low-carbon and highly automated operating environment, in line with the trend of global low-carbon economy and the green building concept advocated by governments of various countries, is gradually replacing the operating environment brought by conventional construction technologies.



03

OPERATIONAL FLOW
OF FORMWORK

施工流程

组装阶段 INSTALLATION STAGE

01 浇筑支撑台座 保证地面平整

Cast in supporting pedestal (Required flatness assurance of the ground below it)

02 测量地面水平 并放线定位

Measure the ground horizontal level by line positioning

03 安装底模 预埋套筒

Install base formwork and pre-embed tube sleeve

04 安装轨道

Install the track rail

05 安装外模 及斜撑

Install the external formwork and raking shore

06 拼装内模 及翻转安装

Set up internal formwork for turnover installation

07 安装门窗 及压槽

Install door, windows and grooves

08 安装外模油缸及 泵站B、A, 电控系统

Install the external oil tank, pump station A and B, and relative electric control system

09 绑扎钢筋 及预埋水电管

Bind up steel bars, and pre-embed water and electrical pipes

10 关闭内模 Close the internal formwork

11 安装振动器 Install the vibrator

12 浇筑混凝土 Cast in concrete

使用阶段 UTILIZATION STAGE

1 移动外模就位并拧紧拉杆

Move the external formwork to the intended place and tighten the tie-rod.

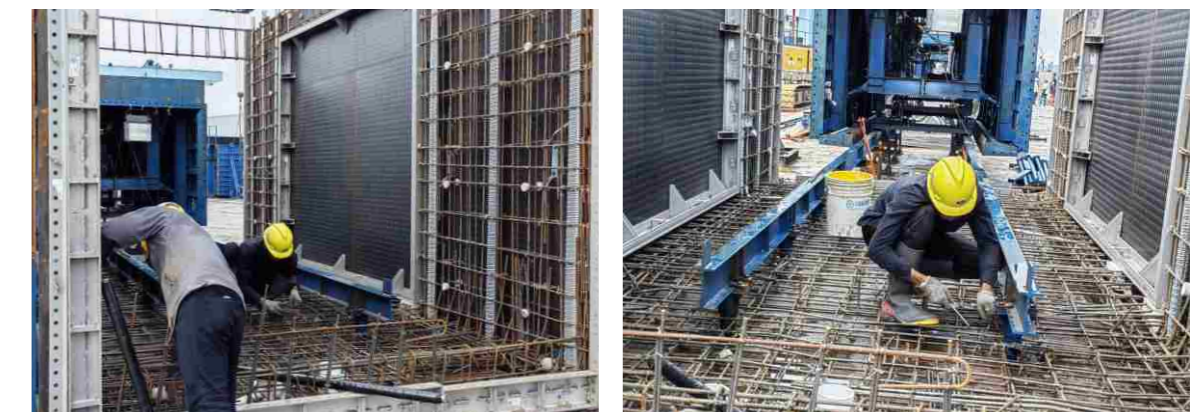


外模:
外模底部设滑动轨道, 采用液压油缸控制前后移动, 滑动轨道处设可调螺杆斜撑进行垂直度的调节。模板加固方式采用顶部、底模对拉。

External formwork:
Set in a mobile track rail at the bottom of external formwork. By using a hydraulic oil tank, the forward and backward mobility of the external formwork is controlled. Meanwhile, adjustable tie-rod raking shore can be set along the sliding track for verticality adjustment of the formwork sides. The formwork is reinforced by adopting the pulling strength between top formwork and bottom formwork.

2 吊装钢筋入模, 安装水电

Hoist rebar into the formwork, and install in mechanical and electrical systems.



3 安装底板支撑预埋套管及内模轨道

Install base props, pre-embed tube sleeve and internal formwork track rail.



4 移动内模就位, 并安装底部防翻浆压板, 安装零星铝模及洞口

Move the internal formwork to the intended place, and install in the bottom anti-spilling board, fragmented aluminium formworks and holes.



5 浇筑混凝土

Cast in concrete.



6 拆除零星铝模及底部翻浆压板, 移出内模, 拆除内模轨道

Dismantle fragmented aluminium formwork and the bottom anti-spilling board, move out the internal formwork and dismantle the track rail of the internal formwork.



7 移出外模

Move out the external formwork.



8 预制构件移至存放区, 开始下一个构件制作

Move the precast component to the storage area, and continue with the production of the next precast components.



MAIN COMPONENTS

主要构件

04

架体系统 Frame System



内模架
Internal formwork and framework



外模架
External formwork and framework



底模
Base formwork

液压系统 Hydraulic System



控制系统 Control System



其他 Others



导轨
Track rail



泵站
Pump station

PROJECT
CASES
工程案例

05



■ Yishun North Gaia

该项目总共11栋楼, 2444个预制单元和91种预制单元结构种类。
我司提供35套自动模具和17套非自动模具通用周转使用完成此项目。

This project consists of 11 towers, formed by 2444 precast modules of 91 structural types.
GETO supplied 35 sets of automated precast mould and 17 sets of non-automated precast mould for turnover in casting in this project.



■ One Bernam

该项目为1栋楼, 我司为38个预制单元提供21套自动模具通用周转。

GETO supplied 21 sets of automated precast mould for turnover in casting 38 precast modules in this tower.



■ Brownstone EC



■ Piermont Grand EC

我司提供22套PPVC模具通用周转使用帮助客户完成此项目
GETO supplied 22 sets of PPVC moulds for turnover in casting in this project.

PROJECT ON SITE

